



# Angled Roof Drain Product Data

## RubberBond Angled Roof Drain

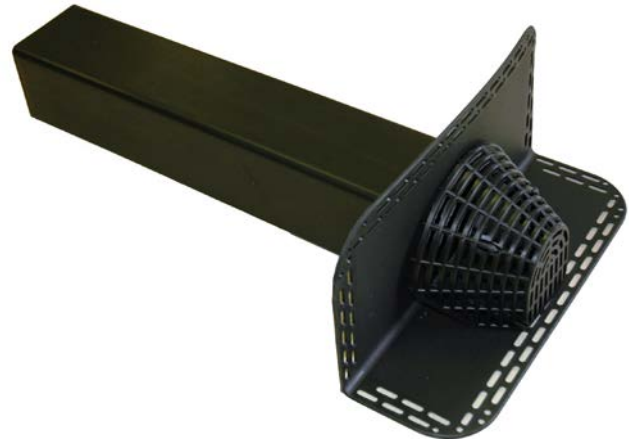
The main use of the drain is to be used as a wall scupper for easy drainage through walls and pitched roofs as well as the potential to be used as a vertical drain in box gutters. The outlet is made of IGOM, a compound of synthetic rubber.

### Intended Uses

One of its main characteristics that it can be used both as an external or internal drain and especially for horizontal drains through thick outer walls. The unit is used in conjunction with bends or fittings having seal rings and thus the joint can be within the wall and the down pipe can be placed at a minimum distance from the wall.

### Features and Benefits

- Right angled flange 140mm x 245mm with fastening holes.
- Outlet opening of 90mm x 90mm.
- Standard outlet length 500mm
- Accessories of 90° shoe and 1m extension pipes.
- Leaf/gravel guard.
- Installation should be carried out with 3° slope.



### Application\*

- 1 Install the outlet into the roof and mechanically fix prior to installation of membrane.
2. Apply RubberBond Bonding adhesive to the outlet (leave a 50-75mm area around the outlet hole with no Bonding Adhesive applied). Mate the membrane to the outlet when ready.
3. Cut a square out from the membrane exposing 50-75mm of outlet flange.
4. Apply RubberBond EPDM Primer to the outlet and membrane and allow to dry and install Uncured Flashing Tape to seal the outlet to the membrane.
5. Install a secondary section of Uncured Flashing tape as a collar inside the outlet pipe.
6. If jointing the outlet to pipe extensions join with a securing band of Uncured Flashing Tape.
7. Insert leaf guard or gravel grate.

**Exclusive British Isles Distributors for Carlisle-SynTec and RubberBond EPDM single ply roofing materials.**

Flex-R Ltd, Sandswood House, Hillbottom Road, Sands Industrial Estate, High Wycombe, Bucks ,HP12 4HJ. Tel: +44 (0)1494 448792 Fax: +44 (0)1494 858433





## Angled Roof Drain Product Data

### Precautions

1. Mechanically fix the drain securely into deck.
2. Ensure the outlet is securely connected to internal pipe work.
3. Water Cut Off Mastic must be applied to the underside of membrane before clamping ring is installed.
4. Ensure no roof debris is gathered in the drain before installation of leaf grate.

RubberBond Angled Roof Drain	
Typical Properties & Characteristics*	
Material	Synthetic rubber IGOM CE
Colour	Black
Outlet Length	500mm
Outlet Internal size	90mm x 90mm

Before using this product please ensure that you have been supplied with and have read carefully the following information:

1. The product labels
2. RubberBond Angled Roof Drain Safety Data Sheet

**Exclusive British Isles Distributors for Carlisle-SynTec and RubberBond EPDM single ply roofing materials.**

Flex-R Ltd, Sandswood House, Hillbottom Road, Sands Industrial Estate, High Wycombe, Bucks ,HP12 4HJ. Tel: +44 (0)1494 448792 Fax: +44 (0)1494 858433

