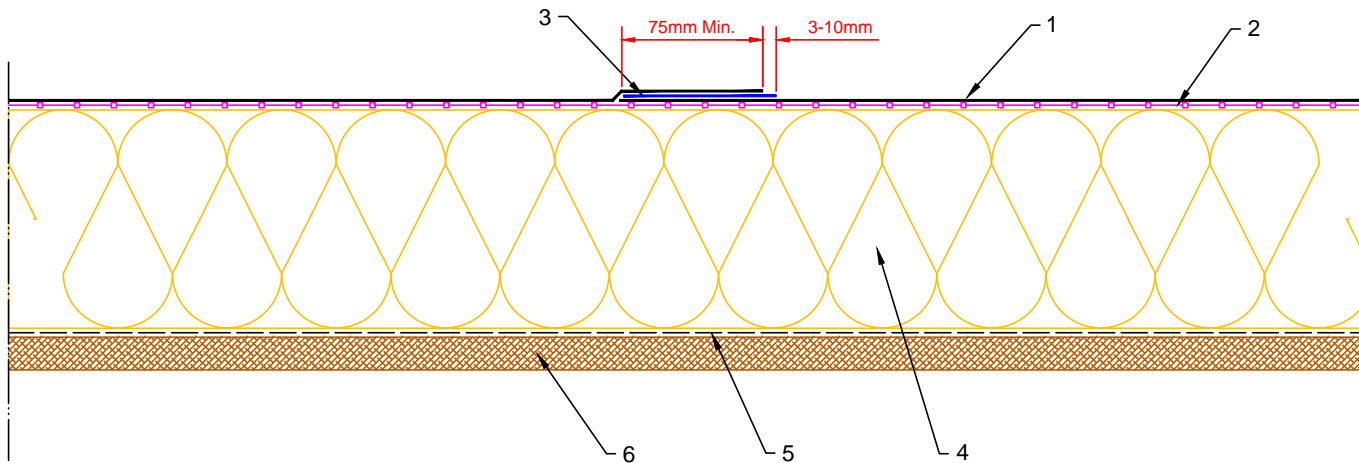


1. RubberBond FleeceBack EPDM
2. RubberBond Decking Adhesive
3. 75mm Factory Applied seam Tape (FAT)
4. Suitable thermal insulation, thickness determined by U-value
5. Vapour Control Layer (VCL)
6. Structural decking



Notes:

1. This detail was prepared to serve as a guideline representing typical detailing conditions and illustrate the correct application of RubberBond products only. It may be necessary to modify this detail in whole or part in accordance with specific project conditions, design or requirements.
2. Prior to installation of FAT apply HP-250 primer to splice areas.
3. At field splice intersections apply a section of pressure sensitive uncured flashing as cover patches - refer to detail FB-S-2



Roofing the world for 50 years  
www.rubberbond.co.uk

|  |  |
|--|--|
| Title<br>MEMBRANE SPLICE WITH SECUR TAPE |  |
| Product<br>RB-S-1                        |  |

|     |          |                  |
|-----|----------|------------------|
| Rev | Date     | Comments         |
| A   | 23.10.12 | PRODUCTION Issue |

|                       |         |          |         |           |
|-----------------------|---------|----------|---------|-----------|
| Drawn                 | Checked | Approved | Scale   | Date      |
| MFO                   | DW      | DW       | 1: 4@A4 | 23.10.12  |
| Status<br>PRODUCTION  |         |          |         |           |
| Drawing No:<br>RB/S/1 |         |          |         | Rev:<br>A |