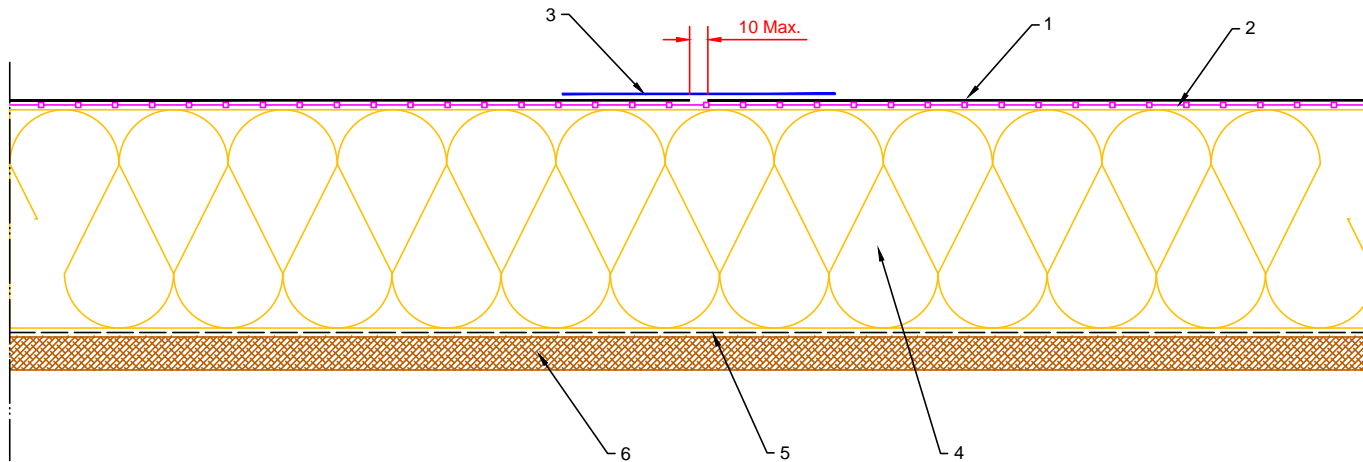
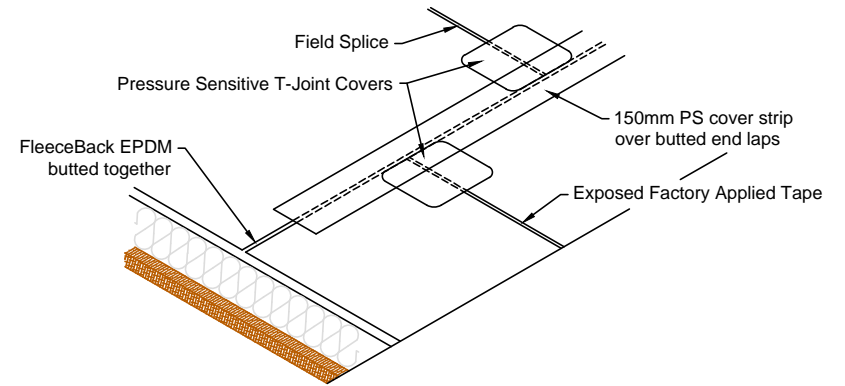


1. RubberBond FleeceBack EPDM
2. RubberBond Decking Adhesive
3. 150mm PS Cover Strip
4. Suitable thermal insulation, thickness determined by U-value
5. Vapour Control Layer (VCL)
6. Structural decking



Notes:

1. This detail was prepared to serve as a guideline representing typical detailing conditions and illustrate the correct application of RubberBond products only. It may be necessary to modify this detail in whole or part in accordance with specific project conditions, design or requirements.
2. Apply HP-250 primer to membrane surfaces prior to installing cured PS cover strip.
3. Apply pressure sensitive uncured T-joint covers at field splice intersections as shown above and at flashing overlays



Roofing the world for 50 years
www.rubberbond.co.uk

Title		END LAP SPLICE / CURED COVER STRIP	
Product		RB-S-2	
Rev	Date	Comments	

A	23.10.12	PRODUCTION Issue	
Rev	Date	Comments	

Drawn	Checked	Approved	Scale	Date
MFO	DW	DW	1: 4@A4	23.10.12
Status		PRODUCTION		
Drawing No:				Rev:
RB/S/2				A