



Paving Supports Product Data

RubberBond Paving Supports

Quickly and easily install a paving or decking system to the roofing surface. The paving supports are placed directly to the membrane without the use of adhesives or fasteners of any sort.

These supports quickly and easily resolve problems arising from the installation of a paving system. The support consists of a high resistance base which is placed directly on to the waterproofing cap sheet. The paving slabs are then placed directly onto the supports without the use of concrete or adhesives of any sort. The base is fitted with guides which position and anchor perfectly the paving slabs and which at the same time act as expansion joints. The base of the support is made of HDPE and its shape allows rainwater to drain and flow off easily on the underlying waterproofing membrane, thus also eliminating any chance of ponding caused by the supports themselves trapping water.

All of the supports are modular and can be stacked so as to achieve the height or thickness of gap underneath the paving desired, and eliminating any unevenness of the roof deck itself. The supports are designed to eliminate cracking and damaging of the waterproofing membrane caused by expansion and contraction of the paving or damage caused by walking on the paving.

Over and above these advantages it is also a very quick and cost effective means of installing the paving. The paving can be readily removed and replaced should it become damaged or should inspection of the waterproofing be necessary, without any damage at all..

Intended Uses

Support for paving slabs or timber decking joists to create a roof top terrace.



Features and Benefits

- Circular pad Ø145mm with a 15mm lift, also 3mm flange available for levelling of slabs.
- Fully interlocking when stacking allowing for a range of heights, steps or slopes to leave a level surface.
- Bases fitted with guides which position and anchor the slabs or decking rafters. These guides allow drainage gap for the slabs and allow for expansion between sections.

Application*

- 1 Install the RubberBond roof and details as per specification.
2. Sweep the roof surface to remove any and all debris.
3. Lay the slabs so that each disc supports the corners of 4 slabs. Where they abut walls or steps the support disc are easily divided into halves or quarters.
4. All cut edges of slabs should be at edges that abut upstands.

Exclusive British Isles Distributors for Carlisle-SynTec and RubberBond EPDM single ply roofing materials.

Flex-R Ltd, Sandswood House, Hillbottom Road, Sands Industrial Estate, High Wycombe, Bucks ,HP12 4HJ. Tel: +44 (0)1494 448792 Fax: +44 (0)1494 858433



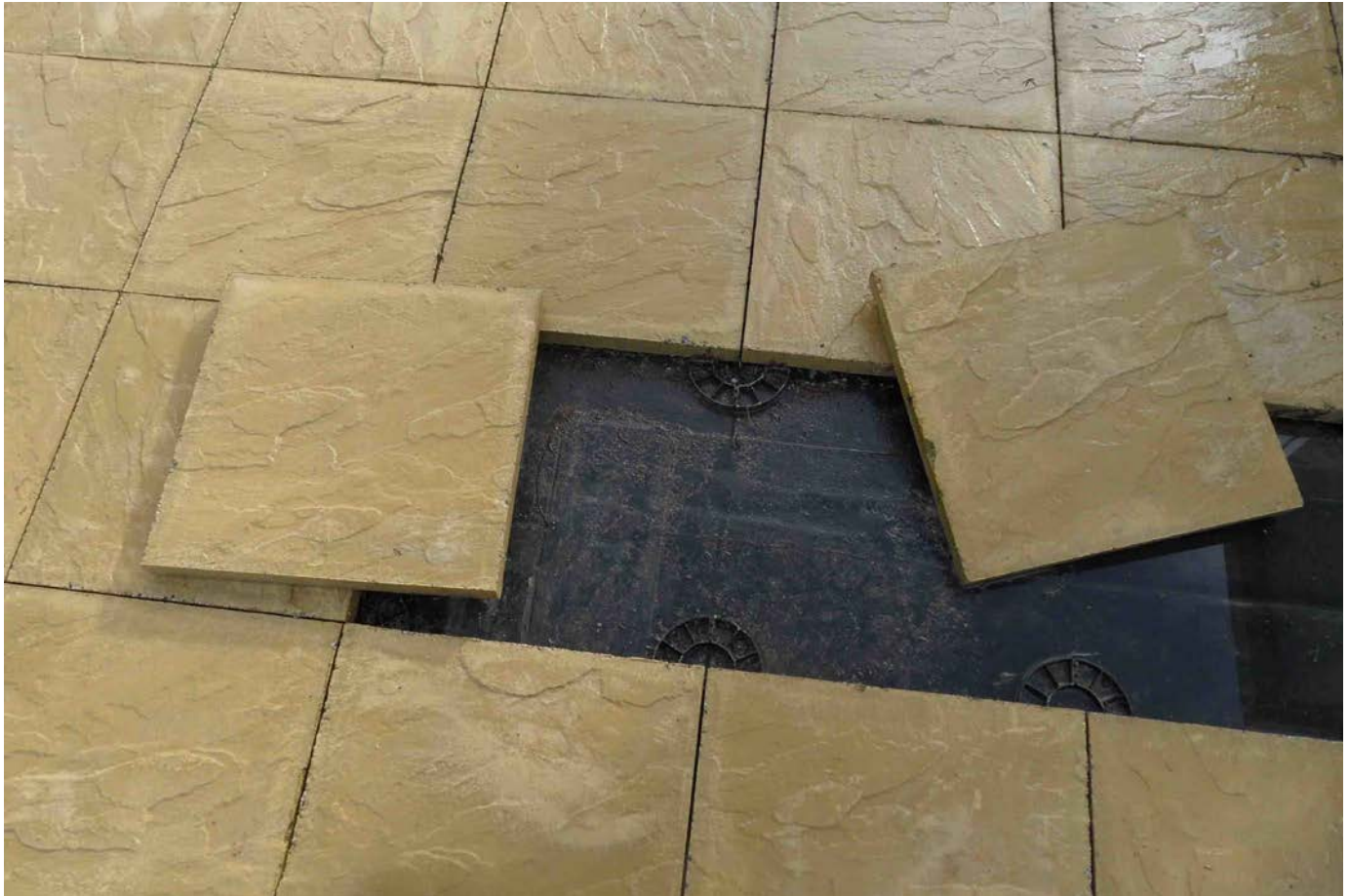


Paving Supports Product Data

Precautions

1. No cutting of slabs to be done on the roof surface.
2. Ensure all fitted slabs are stable and do not wobble.
3. No debris on the roof before installation.
4. No debris trapped under the supports.
5. Ensure the slabs used are strong enough to be supported by the corners.

RubberBond Anti-Back Roof Drain	
Typical Properties & Characteristics*	
Material	HDPE
Colour	Black
Support Diameter	145mm
Support Height	15mm



Before using this product please ensure that you have been supplied with and have read carefully the following information:

1. The product labels
2. RubberBond Paving Supports Safety Data Sheet

Exclusive British Isles Distributors for Carlisle-SynTec and RubberBond EPDM single ply roofing materials.

Flex-R Ltd, Sandswood House, Hillbottom Road, Sands Industrial Estate, High Wycombe, Bucks ,HP12 4HJ. Tel: +44 (0)1494 448792 Fax: +44 (0)1494 858433

